

## OCCASIONAL LIST – AUTUMN 2022

PALINURUS ANTIQUARIAN BOOKS

PO BOX 2237  
Jenkintown, PA 19046

[jh@palinurusbooks.com](mailto:jh@palinurusbooks.com)

### 1. Delegorgue, Adulphe - AFRICA.

#### **Voyage dans l'Afrique Australe dans le Territoire de Natal ...., 2 vols.**

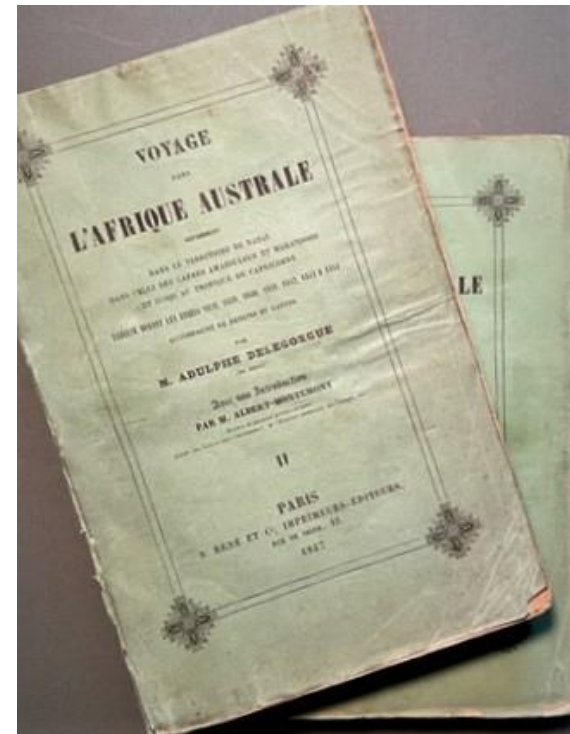
Paris: A Rene, 1847.

First Edition. 8vo, I - xvi, [1] - 580pp. + frontispiece, 4 plates, and a folding map; II - [4], [1] - 622, [2 - errata] pp. + 4 plates, and a folding map.

Very good; untrimmed; text block split in volume 1; large light offset stain to one map; a bit of infrequent smudging.

Original printed green wrappers.

*Delegorgue's parents died when he was young. At the age of 16 he began to sail around Europe, northern Africa and the Antilles. As a young man he sailed to the Cape of Good Hope and travelled through southern Africa along with J.A. Wahlberg and F.C.C. Krauss (both describing Delegorgue as a "naturalist") aboard the Mazeppa.*

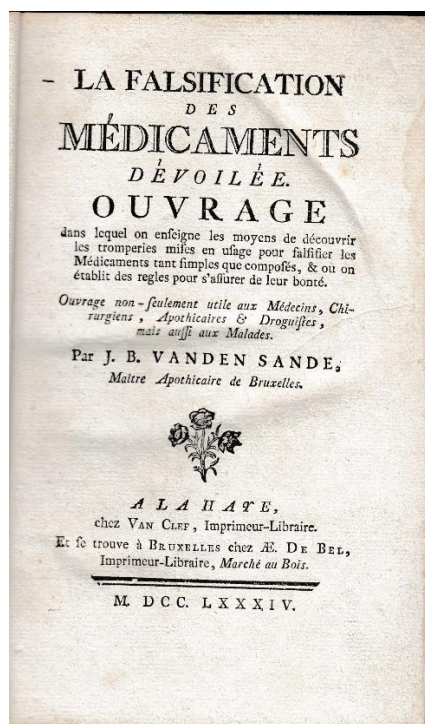


*He made repeated trips to southern Africa in 1841 and in 1842, hunting and collecting artifacts for the museums in Paris and Douai. The book offered here is an account of his three expeditions. The second volume includes a glossary of the Zulu language and catalog of butterflies. Several species have been named from the specimens he collected including the birds *Columba delegorguei* and *Coturnix delegorguei*. Rookmaaker recounts the confusion around one of the few recorded specimens of the South African "blue bock" the hippotragus leucophaeus that is erroneously attributed to Delegorgue years after it was extinct. See Rookmaaker, Zoological Exploration of Southern Africa, pp. 259 & 301.*

\$475

## 2. van den Sande, J[ean] B[aptiste] [Augustin] - PHARMACEUTICAL ADULTERATION.

### La Falsification des Médicaments dévoilée Ouvrage ....



La Haye / Brussels: Van Clef / de Bel, 1784.

First Edition. 8vo, [4], xxiv, [1] - 430, [13 - index & errata], [1 - blank], [8 - adverts.] pp. One leaf of the errata with a blank verso is misbound.

Very good; some wear to the spine.

Early nineteenth century half binder's cloth and marbled boards.

*An examination of the means and methods of the falsification and adulteration of drugs. The first 270 pp. are given over to botanical medicine and how the resins, extracts, and distillates are falsified. The remainder of the text deals with various mineral sources and their chemical preparation. The author was a pharmacist. Hirsch V, pp. 6-7 (commenting that the book was among the first to touch on this subject and was still a useful reference); Blake, p. 400; absent from Waring and Schelenz.*

\$925

## 3. Children.

### Child's Decorated Cotton Quilt Cover.

ca1940 [?]. 52.25 inches long x 35.5 inches wide; comprised of ten black and white printed panels appx. 10.25 inches x 8.75 inches, stitched together in an alternating pattern with white panels. The printed panels are scenes from well-known children's rhymes or stories accompanied by several lines of printed representative text. The cotton base and printed panels are made from a sturdy cotton. Very good overall with some light soiling. As issued.





*Partial View*

*What appears to be a child's cotton quilt cover decorated with black and white printed panels illustrating scenes from nursery rhymes or stories. The date is uncertain.*

*\$400*

4. Laidman, Hugh Herbert – GUADALCANAL.  
**Original watercolor of a Grumman J2F "Duck"**  
**search & rescue seaplane at Guadalcanal.**



Guadalcanal: Unique, 1942. Large, accomplished, watercolor that measures appx. 15 x 22 inches; signed "Sgt. H Laidman". The watercolor is early in the battle for Guadalcanal because it is signed "Sgt." therefore before Laidman's battlefield commission. The sheet of watercolor paper is mounted (not recent) to board; hand-written label on verso. Very good with "fresh" color.

*In 1942, Hugh Laidman, commercial artist, enlisted in the United States Marine Corps and served as a Sergeant with the aviation unit at Henderson Field. He was also a combat artist in the South Pacific, chronicling the battles throughout the Pacific Theater of Operations. He was head of the USMC art program and along with his fellow Marines Elmer Wexler and Vic Donohue, were the first three artists to go into combat at Guadalcanal during WWII. He received a battlefield commission and eventually contracted malaria, but still managed to produce numerous sketches of the engagement. Some of his battle scene watercolors of planes & flyers were exhibited in a group exhibition (traveling exhibit) at the Museum of Modern Art in 1943 entitled "Marines Under Fire", as well as the National Gallery of Art.*

*\$850*

5. United States: Department of State - [Pickering, Timothy] - PRIVATEERING.

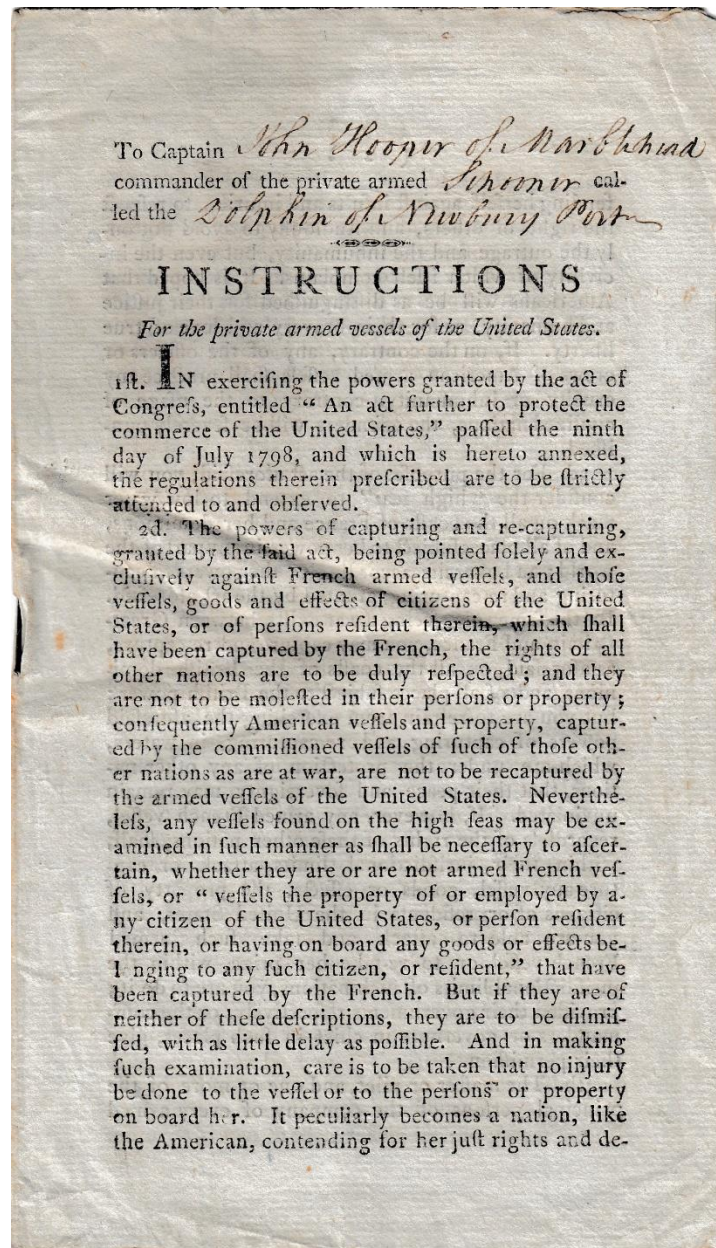
**... Instructions for the private armed vessels of the United States [Drop title].**

[Philadelphia]: Department of State, [1798].

First Edition. 8vo, 8 pp. Final leaf signed in full by Timothy Pickering, Secretary of State.

Very good - fine. As issued.





Issued by the Dept. of State as a result of "An Act Further to Protect the Commerce of the United States" on July 9, 1798. The pamphlet provided strict instructions as to the treatment of French vessels and French vessels alone that were carrying goods seized from American owners. The ructions in American - French relations were the result of pique on behalf of the French at the Americans concluding the Jay Treaty with the English during a time of conflict between the continental powers. Armed ships were dispatched by the Americans - in no way capable of directly challenging the French navy - to confront the French. Each pamphlet was specifically addressed (in this case Capt. John Hooper of Marblehead, commander of the armed schooner "Dolphin" out of Newburyport) to individual sea captains. Evans #34695. \$1,800

6. [Moore, Margaret Jane (King) - Countess of Mount Cashell]. **Advice to Young Mothers on the Physical Education of Children.**

Boston: Hilliard, Gray and Co., 1833. First American Edition. Revised. 8vo, xvi, [17] - 355 pp.

Very good; binding chafed; occasional spotting.

Full contemporary leather.

*Margaret King Moore, Lady Mount Cashell a writer of female-  
emancipatory fiction and health advice. Despite her wealthy  
aristocratic background, she had republican sympathies and  
advanced views on education and women's rights, shaped in part by  
having been a favored pupil of Mary Wollstonecraft. Settling in Italy  
in later life she offered maternal aid and advice to Wollstonecraft's*

daughter Mary Shelley (author of *Frankenstein*) and her travelling companions, husband Percy Bysshe Shelley and stepsister Claire Clairmont. In Pisa she continued the study of medicine which she had begun in Germany (cross-dressing for the purpose, as universities were restricted to men) and published her widely read *Advice to Young Mothers*. The contents are entirely medical. It includes an additional chapter and pediatric materia-medica. Uncommon. S&S #17261. \$400

7. Gayarré, Charles Etienne Arthur.  
**Histoire de la Louisiane, 2 vols.**

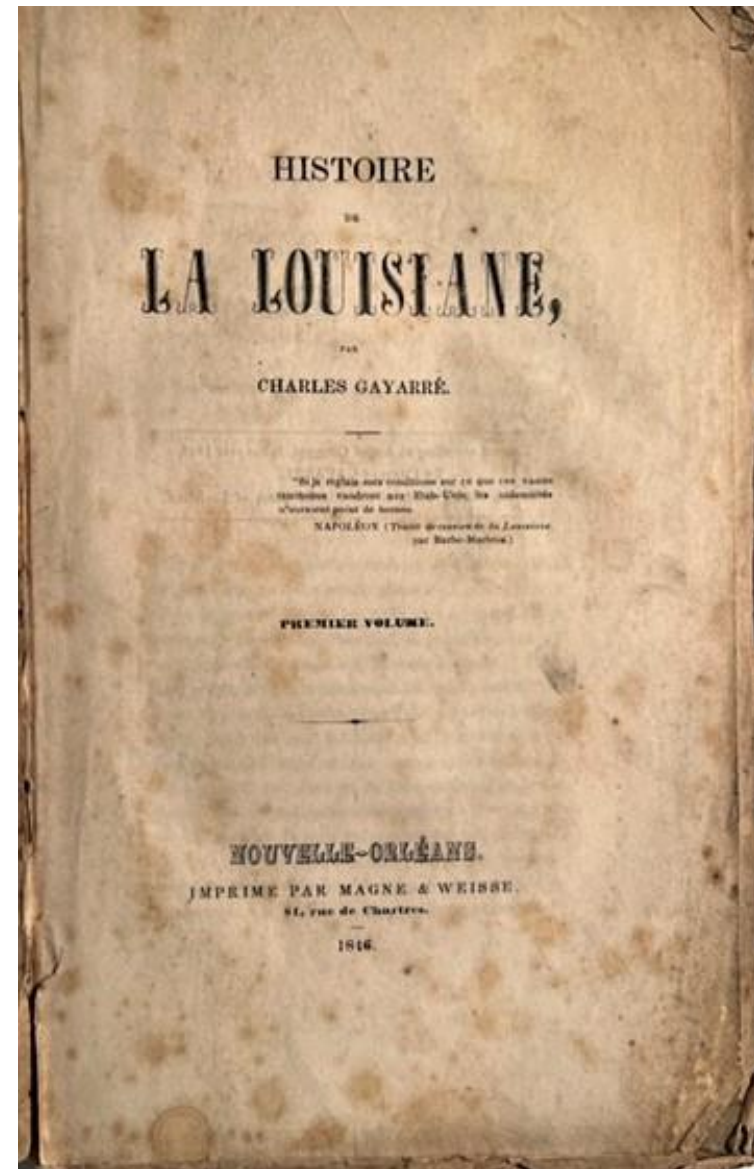
New Orleans: Magne & Weisse, 1846 - 1847.

First Edition. 8vo, I - [4], xi, [1 - blank], [1] - 377 pp.; II - vii, [1 - blank], [1] - 427 pp.

Good; spotting throughout; original printed wrapper for front of volume II other volume disbound; occasional minor insect damage at an edge; light occasional tide mark; untrimmed. A copy that has spent its life in LA.

Original printed wrappers.

Jumonville, #1443 & #1550. Howes G-85 - "Covers French period only". \$550











8. Ferguson, James - PAPER ASTRONOMICAL INSTRUMENT - MOON.

**A New Astronomical Instrument. Shewing the Day of the Month, Change and Age of the Moon, the Places of the Sun and Moon in the Ecliptic, with the times of the rising, southing and setting of the Sun, Moon, and Stars ... from A.D. 1756 to 1805 inclusive.**

[London]: James Ferguson [Astronomer/Author], Aug. 29, 1757. First Edition. Folio; sheet meas. 490 x 370 mm.. Engraved surface meas. 440 x 325 mm. The device is made-up of an engraved printed sheet and large volvelle comprised of two hand-colored disks (270 and 225 mm. in diameter) pinned with thread and centered on one another. The fixed ring, 300 mm. in diameter, is engraved with the months and days. The first disk: moon phases, zodiac, day scales, months and days also containing a printed rendering of constellations with a printed ecliptic and equinoctial divided in degrees. The second disk: day and night hours, moon phases and hour scales for the lunar month; it has a rule with a printed degree scale across a circular cut-out that rotates eccentric to volvelle's pivot point to reveal the printed constellations below. Contemporary hand-coloring to all surfaces of the volvelle and constellations. Verso of the mounting sheet is blank. Paper is "thick".

Good; some soiling and dustiness; one area appx. a quarter inch with what appears to be a loss of some applied color because of insect damage; bit of wear to a portion of one vertical margin. As issued.

*"During the latter part of the seventeenth century most astronomers had come to accept the position that the longitude could only be solved by means of precise observations of the Moon: and the necessary degree of precision was set by the fact that an error of 5' in reading the Moon meant an error of 2.5 degrees in the longitude." (Taylor, Heaven Finding Art). The problem being set in this manner it was necessary to eliminate or at least reduce to a minimum the observational errors introduced when viewing the Moon for navigational purposes. Ferguson proffers ten ways in which one can utilize his new instrument. Passing over the first three that are*

*devoted to forecasting phases etc. he instructs the reader in how to locate the Sun in the ecliptic for any day, to find the Moon for the same, to find the time for the rising and setting of the Sun for any day, to find the Moon for the same, to find the rise, setting, and "southing" for any star, to find what stars may be rising etc. for any given hour, and finally to find the meridian altitude of the Sun on any day. Though not offering a solution to the formidable arithmetic of lunar navigation the instrument did eliminate some of the potential errors (endemic to observations is the fact that the Moon always seems to be lower and the Sun higher). Though Harrison's chronometer trials were a success within a decade of the instrument's publication, adaptation of the new "timed" longitude measurement took decades to finally become the standard. "Lunars" continued in use through the 1850s. Ferguson's instrument, given its paper construction, is a rare survival, more so in its contemporary color incarnation. The issue of the orbit of the Moon and Sun-planet alignments in the solar system has no simple solution. The problem is addressed by Martin Beech in an article in the Bulletin of the Scientific Instrument Society, #125, June 2015, pp. 30-37 and esp. pp. 34-37 concerning Ferguson. A dramatic artifact. See DNB VI, 1206-1211; see the essay by D Howse in Andrewes, Quest for the Longitude; OCLC cites one location (Scotland) for a color copy; two other copies at BL and APS only.* \$16,500.

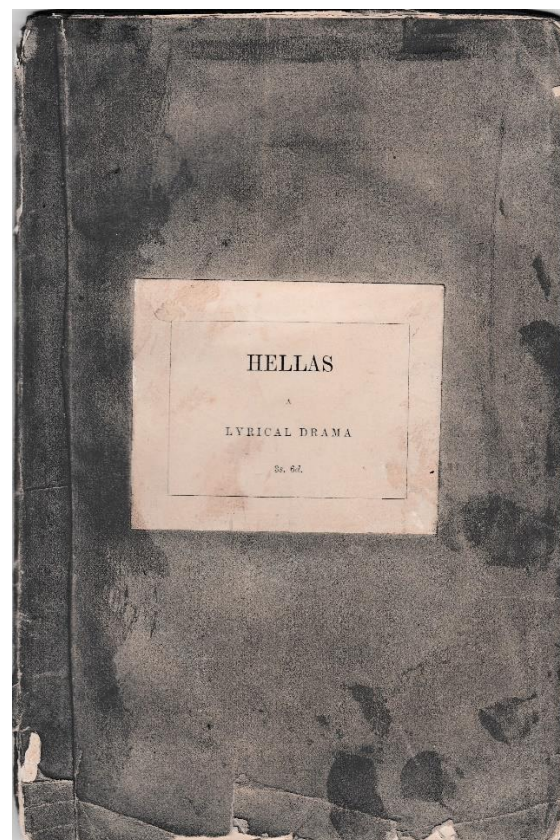
## 9. Shelley, Percy Bysshe.

### **Hellas A Lyrical Drama.**

London: Charles and James Ollier, 1822.

First Edition. 8vo, xi, [1 - blank], [2 - fly title], [3] - 60 pp.

Good; some soiling to the wrappers; amateurish paper re-back; 4 pages carelessly opened; chipping to the lower edge of the fore-corner of the last 3 leaves; dustiness at the extreme edges. Original stiff grey wrappers and paper label.



*Shelley's last published poem; written in 1821 while resident in Pisa, months before his death. It's theme is the Greek revolt for independence. "For / Revenge and wrong bring forth their kind, / The foul cubs like their parents are, / Their den is in the guilty mind, / And conscience feeds them with despair." Granniss #74.* \$1,800



10. Cooper, Astley [Paston].  
**Illustrations of the Diseases of the Breast ... In Two Parts. Part One** [all published] - BOUND WITH - **The Anatomy of the Thymus Gland** - BOUND WITH - **A Treatise on Ligaments** by Bransby B Cooper (nephew of A Cooper).

London: Longman .., 1829 / 1832 / 1825.

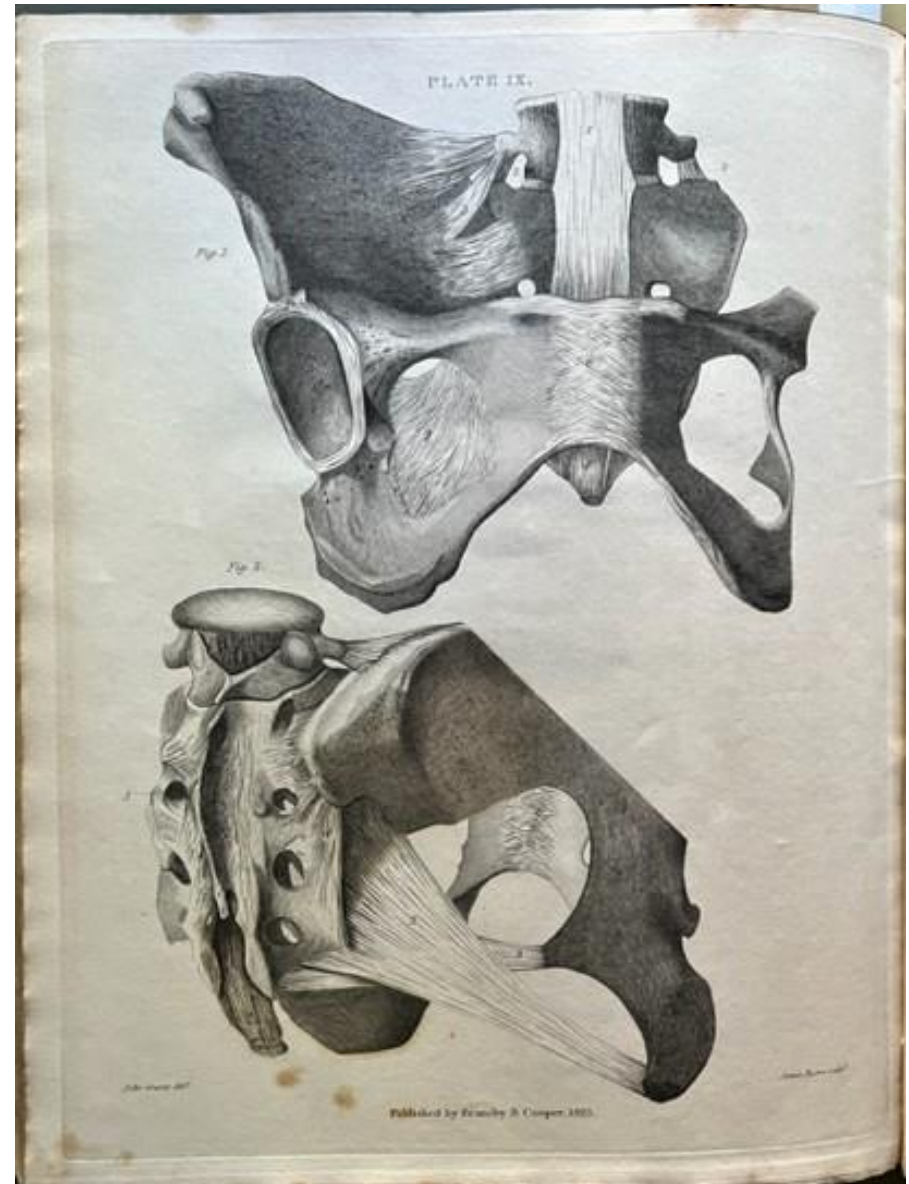
First Editions. Large 4to, I - [8]. [1] - 89, [1 - blank] , inserted errata slip, [18 - plate explanations; printed one side only] pp. + 9 plates (8 in color lithography; 1 black and white); II - [6 - no half-title], [1] - 47, [9 - plate explanations] pp. + 5 partially hand-colored lithographic plates; III - xi, [1- blank], [1] - 151 (plus an inserted printed slip of explanation for the illustration at page 75), [1 - blank], [26 - plate explanations] pp. + 13 black and white lithographic plates.

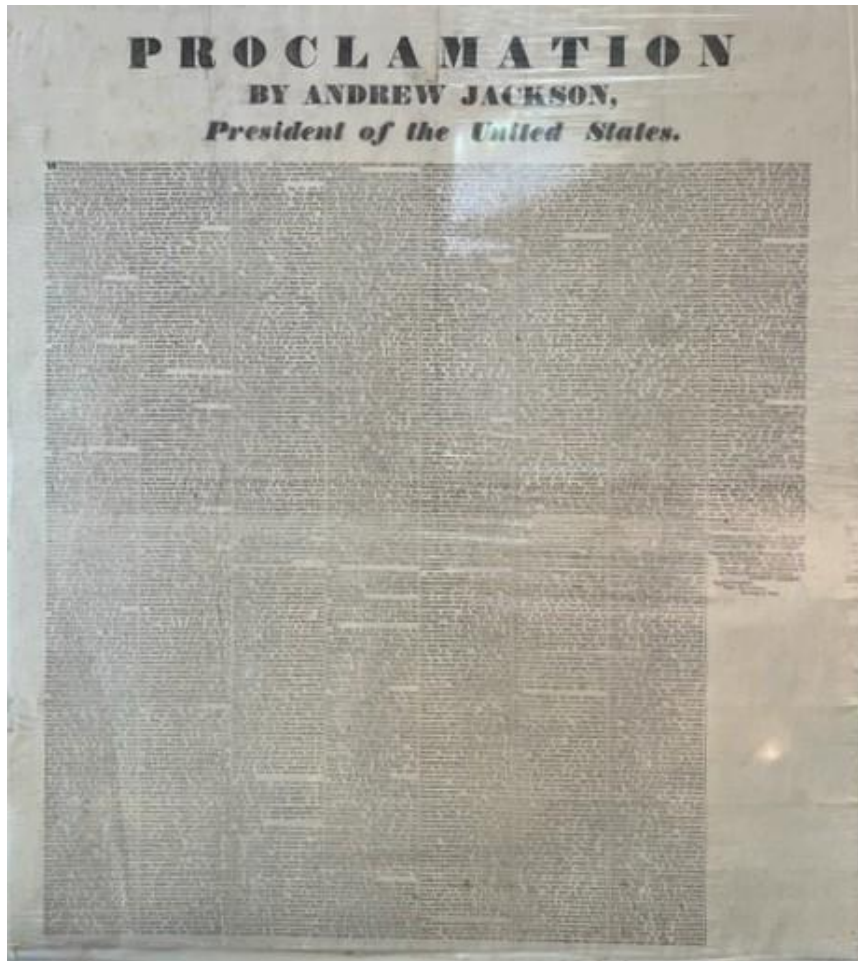
Very good; somewhat foxed here and there; 19th century institutional stamp on the verso of the first title page and last page in the book - no other accessioning; professionally rebacked at some time in an appropriate style.

Contemporary three-quarter leather over marbled boards.

*I - "Contains one of the earliest descriptions of hyperplastic cystic disease of the breast" - Norman #510; G-M #5769; Goldschmid, p. 133; II - Cooper described the thymus gland and its functions. Norman #512; G-M #1119; Medvei, pp. 176-177; III - A study published by A Cooper's nephew to supplement the noted physician's work on dislocations and fill a gap in the English language medical literature on the ligaments.*

\$1,975





11. Jackson, Andrew (President) - SOUTH CAROLINA.  
**Proclamation ... a convention assembled in the  
 state of South Carolina ....**

[Washington, DC / South Carolina?]: [Dec. 10, 1832].

First Edition. Folio broadside measuring appx. 64.5 x 58 cm. Signed in type by both Jackson, as President, and Edward Livingston, Secretary of State.

Printed in 8 columns on milled, unwatermarked paper; text awkwardly imposed.

Very good; pressed.

As issued.

*Jackson's famous denunciation of nullification of the federal tariff laws as treason, and his intention to enforce the laws of the United States. Probably the most noted example of nullification in American history until the Civil War. Hostility to the federal protective tariffs was intense in South Carolina and finally manifested itself in the "people's" convention (Nov. 1832) to nullify the tariffs of 1828 and 1832. South Carolina stood alone in this and refused to go through the courts to obtain relief. Jackson responded swiftly with this proclamation threatening military action (Congress' Force Bill) to enforce the federal tariffs. Streeter, III, #1738; Sabin #35352. \$2,450*

## 12. COOKERY BROADSIDE.

### **Call for Duryeas' Improved Corn Starch.**

Glen Cove, NY: Wm Duryea, ca1880.

First Edition?. Broadside meas. appx. 360 x 250 mm.; printed in three columns.

Very good; old folds.

As issued.



The broadside offers corn starch made by the Glen Cove Mfg. Co. through the agency of Wm. Duryea. Aside from touting the efficacy and usefulness of the product it also provides 24 recipes for cakes, puddings, and sauces. \$225



### 13. SALESMAN'S ILLUSTRATED PRE-PUBLICATION CIRCULAR - ARCTIC.

#### The Greely Expedition.

America, unknown place. [Philadelphia?]: ca1885. Large 4to sheet meas. appx. 292 x 235 mm. It is printed recto and verso, English/German, with the same large illustration of a man crawling in an Arctic ice field.

Good; some old folds and some modest discoloration/wear along an old crease.

As issued.

*It appears this illustrated, sensational account was not published (the price was to be twenty cents) - no location in OCLC. Obviously trying to cash-in on the tragedy the unidentified publishing company refers to the book that "will be" published once sufficient subscriptions have been recorded. In order to accomplish this the canvassers were also sent out to the visit the PA German townships, hence this bi-lingual circular advising the reader of an imminent visit by an agent. Handsome and rare piece of Arctic ephemera.*

Unlocated.

\$675

### 14. Wolfe, Thomas - AUTHOR'S FIRST PUBLICATION.

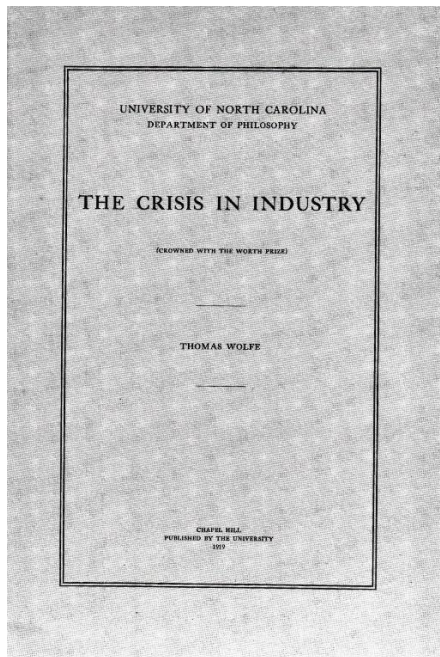
#### The Crisis in Industry.

Chapel Hill, NC: The University of North Carolina, 1919.

First Edition. 8vo, [4], [5] - 14, [2 - blank] pp.

Near Fine. Oversewn and bound with a group of three other pamphlets in plain library cloth; NO accessioning.

Original grey printed wrappers - as issued.



*The author's first publication. One of 200 copies. Wolfe's undergraduate thesis for which he received the Worth Prize. Preston #1; Bradley Martin Library, Part VI, Highly Important American Literature, #2277 (illustrated).* \$2,450

15. [Rulie, P / Gouttes, J-L / Turgot, A R] - MONEY.  
**Théorie de l'intérêt de l'argent ....**

Paris: Barrois, 1780.  
 First Edition. 12mo, xxiii, [1], [1] - 306, [3 - privilege dated 1780 with a printer's slug of Hèrrisant]  
 Near fine copy. Full contemporary calf.

*The book was originally written by the Abbe Rulie but then considerably revised and enlarged before publication by Abbe Gouttes and the Minister of Finance (1774-'76) Turgot who was one of the great economists of the 18th century. The book is a summary of the historical debate of the controversy surrounding interest on money. The author's vigorously support the principle of interest on loans. Chapter XI is devoted to the relationship between money and commerce stating that commercial activity could not exist or expand without interest bearing loans. The argument runs clearly along the lines of Turgot's Sur les Prêts d'Argents, in defence of interest, which Schumpeter had classified as 'by far the greatest performance in the field of interest theory the eighteenth century produced' (Schumpeter, p. 332). Kress, B-319; Einaudi #2667.* \$725

16. Gervasoni, G - OBSTETRICS - INSTRUMENTS.  
**Su l'uso de'nuovi Stromenti di Ostetrica del Cav. Prof. Assalini.**

Milan: Annali di Scienze e Lettere, 1811. First Edition. 8vo, 16 pp. + 3 large folding engraved plates of the forceps and other instruments.  
 A very good copy.  
 Modern blue paper boards.

*An intriguing pamphlet. It is a review of the uses and improvements of obstetrical forceps introduced by Assalini in 1788. This sort of review is most uncommon in the medical literature. Gervasoni is complimentary about the instrument and bases his remarks on*



*personal experience as well as that of others in Milan . The plates are detailed and informative. See Hirsch for Assalini.* \$350

17. De Morgan, A.

**An Explanation of the Gnomonic Projection of the Sphere ... Maps of the Stars ... of the Earth.**

London: Baldwin & Cradock, 1836.

First Edition. 8vo, [4], 126, [2 - adverts], [8 - inserted adverts] pp.  
Very good.

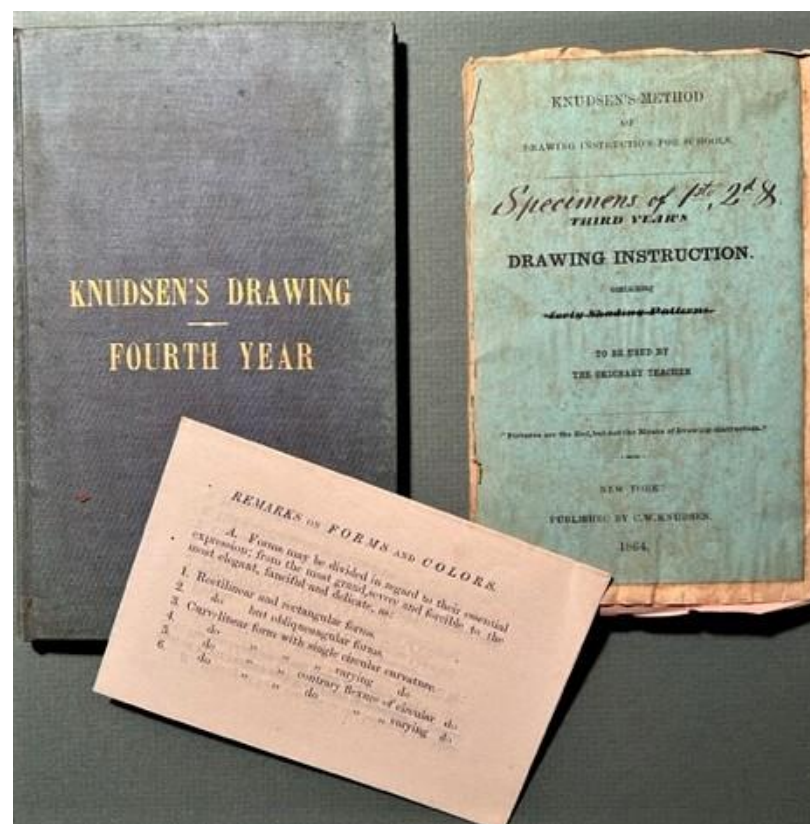
Contemporary binder's cloth.

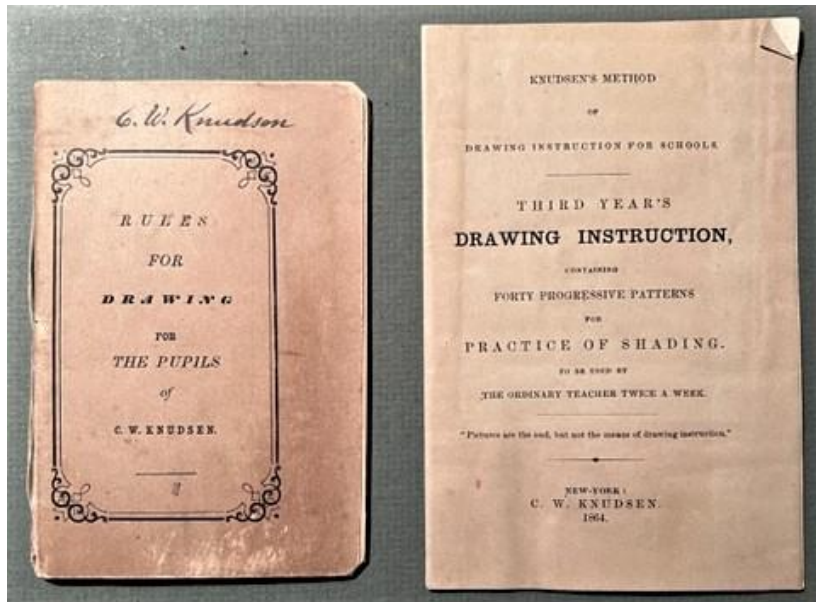
*One of De Morgan's earliest books. The book is a detailed explanation of the relation between projections in general and the surface of the sphere which they represent. There is also an important appendix to the text explaining the origin of Herschel's catalogue of double stars and the ingenious measuring device he developed to accurately gauge astronomical distances while viewing through a telescope.*

\$250

18. Knudsen, C W.

**Archive of the papers of the American drawing master Carl Wilhelm Knudsen (1818 - 1894).**





personal papers from throughout his career; some original art; a number of the manuals, pamphlets, and notices that he had printed to teach drawing to school students. The printed manuals are : 1] Rules for Drawings for the Pupils of C W Knudsen, nd, np with two inserted litho. handbills; 2] Rules of Perspective for the Pupils of C W Knudsen, np, nd with 4 inserted printed notices; 3] Knudsen's Method of Drawing Instruction for Schools. Third year's Drawing Instructions ...., New York, Published by C W Knudsen, 1864, orig. slipcase with printed labels, 2 inserted printed notices, 2 books of instruction, 17 black and white litho. cards meas. appx. 3.5 x 6 inches with erratic numbering [appears to be a printer's dummy or proof copy for the fourth item listed here]; 4] Knudsen's Method of Drawing Instruction for Schools. Third Year's Drawing Instruction. containing forty Shading Patterns. To be Used by the Ordinary Teacher, New York, Published by C W Knudsen, 1864, orig. slipcase with printed labels, inserted notice, instruction book, 40 black and



white litho. cards meas. appx. 3.5 x 6 inches signed with initials 'CK' in the plate; 5] Knudsen's Method of Drawing Instruction for Schools. Fourth Year's ... How to Draw From Objects ...., New York, Published by C W Knudsen, 1866, orig. publisher's gilt stamped cloth, 2 large fldg. black and white litho. plates, inserted 4 pp. notice printed on lined paper in italic type and entitled, 'Remarks on Trees'; 6] A 17 pp. 12 mo. manuscript notebook in Knudsen's hand (written mostly verso) with corrections and small anatomical drawings throughout, discussing proportions of the head, eye, nose, ear, musculature of the skull. This appears to be the manuscript and notes for another pamphlet in the drawing series that was never printed. These are all



*in very good to fine condition. A number of posed photographic portraits of Knudsen from the 1870s. Six small folio notebooks dated from 1853 through 1863 rendering neat, meticulous monthly accounts of expenditures and income for Knudsen; business income and expenses are segregated and defined in detail. There are two small, accomplished gouache renderings of country scenes signed on the verso by Knudsen bearing the initials AFB on the lower left of each ptg.. Each is appx. 2 x 3 inches; both are on mounts. One 8 x 10 inch pencil sketch of a homestead identified as New York May 1862 that is signed by Knudsen. In the 1880s and '90s Knudsen's interests included his English language reformation schemes. This entailed a project of spelling reform. The corollary to this was his idea for the "re-formation" of the English alphabet. The remnant of this misbegotten project is present in the archive in a series of type punches that Knudsen either ordered or cut himself that were intended as models of the reformed alphabet. Occasional correspondence on the topic or in the new spelling is also present. In tandem with this project were his series of public lectures on the sciences and arts. The lecture schedule for 1892 - 1894 is present along with the notes for his lectures on the principles of beauty in embellishment and a lecture on taste in the arts. Accompanying this is a small 4to. notebook containing many newspaper clippings pertaining to the lectures. These occupy the blank pages of a detailed record of house construction presumably for Knudsen, in Norwalk. Finally there are appx. 75 pieces of correspondence to Knudsen regarding his projects as well as a number in Danish from the 1840s. Unknown to Bermingham.*

\$15,000

19. Cutbush, J.

**A System of Pyrotechny ... designed for exhibition and for war.**

Philadelphia: Clara F Cutbush, 1825.

First Edition. 8vo, xlv, 612 pp. + one plate of rocket designs.

Fair; binding worn with boards detached; internally some moderate spotting and toning.

Full contemporary calf.

*Cole describes this as a systematic and comprehensive work that is based upon careful experiment and extensive reading. The central part of the book contains a detailed discussion of the substances used in the manufacture of explosives, munitions, and fireworks. An important book. Rink #2158; Cole #317.*

\$425

20. Warren, J C - NEUROLOGY - EVOLUTION.

**Comparative View of the Sensorial and Nervous Systems in Man and Animals.**

Boston: J W Ingraham, 1822. First Edition. 8vo, [4], [5] - 159, [1 - blank] pp. + 8 engraved plates.

Good; boards detached; spine abraded; some paper residue on the front and rear joint; faint tide mark to the lower portion of the plates otherwise clean throughout. Original publisher's printed boards.



Warren is best known as a surgeon. The book offered here is an early publication for the author and atypical of the sort of thing published in post-colonial America. The text has a vague foreshadowing of Darwin's theory of evolution. The plates are quite detailed. Kelly & Burrage, pp. 1263-1264. \$800

21. Kolle, W & Wassermann, A - PHOTOGRAPHY.  
**Handbuch der pathogen Mikroorganismen .... ATLAS ONLY.**

Jena: G Fischer, 1902.

First Edition. Small folio. [2], [3] - 8 [printed in double columns], [36 - explanatory text for the plates] pp. + 12 photographic plates with multiple figures.

Good, with the binding being somewhat worn; hinges cracked. Original publisher's printed cloth.

The important and rare ATLAS VOLUME ONLY to the multi-volume work. This atlas contains an informative technical essay on the problems and application of photography to the microscope to accompany the twelve photographic plates (please note, the plates are actual photographs) of the pathogens. The early efforts of Koch in 1877 and 1881 are the first use of photography to record the structure of pathogens. The work offered here benefits from the great technical advances in the optics and dyes used (all discussed) that allowed for accuracy that is orders of magnitude better than anything previously accomplished. The atlas is credited to E Zettnow. See G - M #2517. \$350



## 22. Tardieu, A - TERRESTRIAL GLOBE.

### **Globe terrestre, dresse par Ambroise Tardieu, d'apres l'invention die A Weinling et cie.**

Strasbourg: Marin & Schmidt, 1831.

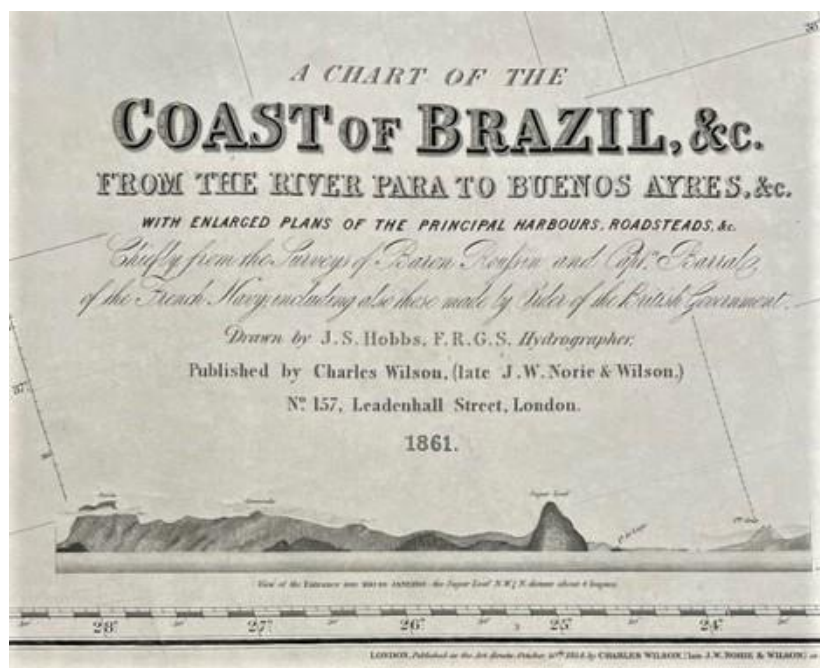
First Edition. The globe is comprised of 12 gores printed on kid leather and handcolored. An excellent copy with occasional light surface wear and one or two spots; the black base stand is a modern reproduction.

*An incredible survival including the original decorated paste paper cylindrical box it was sold in by the manufacturer. Ten years ago Sotheby's claimed they were selling the only known existing copy in private hands of this globe (June 1991, lot # 404). Apparently they were incorrect. Here is another, better example. The globe was originally to be inflated for use and then deflated, taken down, and stored. It was intended for the amusement of adolescents. Both terrestrial and celestial globes were offered by the manufacturer. The globe is made up of 12 gores of kid skin and two polar calottes of the same material that are so skillfully joined as to appear seamless. The gores were printed from steel engraved plates and then handcolored. The coloring, names, outlines of countries, geographical points of interest etc. all remain fresh and legible (Dolz refers to the fact that the globe he so meticulously describes is nearly illegible because of age browning). Tardieu is recognized as one of the premier French map engravers and the globe benefits from the inclusion of the most recent mapping of the unknown portions of the world (all major voyages of discovery are included through Dumont d'Urville and Beechey in 1826/27). The diameter is appx. 8 1/2 inches with all the text in French. There is a brass valve*

*with a stopcock at the north pole and a brass pinion at the south pole. The globe rests and turns in a wood meridian ring, horizon ring, and quadrant. The rings retain their original brightly finished orange and green enamel paint. The rings and quadrant are overlaid with paper engraved with designs of the zodiac, place names, coordinates, climate, and degree markings. There is an hour ring with a brass pointer at the north pole. The horizon ring has inset brass fittings to align the quadrant and meridian ring and provide a rigid structure when assembled. Overall the condition is excellent. A brass stand contemporary with the globe, but not original to it, is provided. The box accompanying the globe has a hole on the underside not affecting the printed surface. A wonderful cartographic artifact. Dolz, Erd - und Himmelsgloben, pp. 58-59; absent from Yonge.*

\$6,500





23. Wilson, Charles.

**A Chart of the Coast of Brazil, &c. from the River Para to Buenos Ayres, &c. with Enlarged Plans for the Principal Harbours, Roadsteads, &c. Chiefly from the Surveys of Baron Roussin and Capt. Barral of the French Navy ....: River Para to Paranagua, Sheets 1&2.**

London: Charles Wilson ... Leadenhall Street, 1861.

Revised. Folio. Blue backed sea-chart meas. appx. 39.5 x 75.5 inches. The details of 19 ports with the addition of 8 profiles are inset. A mounted printed label for Wilson on the reverse side. Drawn by J[ohn] S[tratton] Hobbs, Hydrographer.

Very good; 12" horizontal tear into a blank portion of the chart from one edge; a 3 inch triangular portion of a corner with a repaired tear; some spotty, short, vertical bands of a pale stain caused by damp (in a blank portion) when being rolled - only at one end for about 12 inches in from the margin; otherwise bright and clear. As issued.

*Hobbs became supervisor of the hydrographic department for the Norie firm upon retirement of the principal. The firm came under direction of Charles Wilson at the same time. Wilson a mapmaker was a bookseller as well. He was born in Lucknow, India. He was related to George Wilson, Norie's original partner, and in this way became the eventual owner of the firm. See Worms for the appropriate entries.*

\$275

24. Shuckburgh, G A - RAMSDEN - INSTRUMENT - ASTRONOMY.

**An Account of the Equatorial Instrument.**

London: Phil. Trans., [1793]. OFFPRINT. 4to, [2], [3] - 64 pp + 3 folding tables and 6 large folding plates.

Very good; some occasional spotting; front upper fore corner of wrapper reinforced; backstrip worn; wrappers chipped at the extremities; ownership stamp on the title.

Original blue paper wrappers.

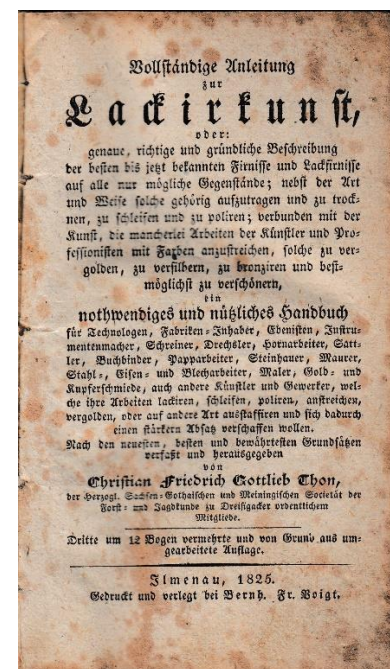




The original offprint illustrating and explaining the design of the great Ramsden equatorial. The instrument and work described herein was the culmination of a life's work and experience. Commencing with the publication of his *Description of a New Universal Equatorial Instrument* in 1774 Ramsden embarked upon an unprecedented career. He was elected a Fellow of the Royal Society in 1786 and winner of the Copley Medal ( for, '... various inventions and improvements in philosophical instruments.' ) in 1795. The quadrant described herein was constructed for George

Shuckburgh's private observatory. The description of the device is lengthy (over 60 pages) and is accompanied by generous fold-out illustrations. Ramsden's workshop completed the commission to the delight of Shuckburgh who wrote: ' ... I am entitled to believe that the accuracy of these divisions under consideration is hardly to be equalled, and still less to be excelled, by that of any astronomical instrument in Europe ....' Shuckburgh presented this copy to a contemporary member of the Royal Society, Charles Englefield, scientist and mathematician. Daumas illustrates the instrument (plate 96) in his discussion Ramsden and astronomical instrumentation. Daumas, p. 170; King, *Telescope*, p. 171; DSB II, 284 - '5; Bennett, *Divided Circle*; see McConnell's book on Ramsden.

\$8,500



25. Thon, Christian Friedrich Gottlieb - DECORATIVE ARTS.

**Vollständige Anleitung zur Lackirkunst, oder:  
genaue, richtig ... und nothwendiges ... Handbuch  
für Technologen ... Ebenisten ....**

Ilmenau: B F Voight, 1825.

Third Enlarged & Revised Ed. 8vo, xxviii, [1] - 737, [3 - errata] pp.

Good with some wear to the binding; spotted and toned throughout.

Contemporary paste paper boards.

*An invaluable reference for varnishes, lacquer work, color and its application to metals, glass, paper, leather, canvas, woods, stone etc.. The author was also responsible for a number of other craft and technology guides, e.g., his two-volume work on bookbinding. The book offered here covers all aspects of the problems of fixing colors and finishes to all kinds of surfaces. It also includes recipes and notes on polishing and preparing surfaces. Engelmann citing only this third edition; no printings in American holdings in OCLC.* \$675

26. Booth, John [Cornelius] - ARBORIST.

**Die Douglas-Fichte und einige andere Nadelhölzer  
namentlich aus dem nordwestlichen Amerika in  
Bezug auf ihren forstlichen Anbau in Deutschland.**



Berlin: Julius Springer, 1877.

First Edition. 8vo, vi, [2], [1] - 92 pp. + 8 mounted albumen photographs meas. appx. 130 x 170 mm. of different species of conifers (2 are reproductions of drawings) and a large detailed folding map of the northwestern United States.

Very good; light spatter marks on the cloth binding; minor tide mark to extremities of 3 leaves; photographs somewhat yellowed; occasional dustiness.

Original publisher's cloth.



John Booth was an arborist who began his career in London working for Veitch & Sons. He and his brother eventually took over his grandfather's business founded decades earlier in Flottbek, a part of Hamburg, Germany. The firm was responsible for introducing into Germany many conifers from the United States - especially for the widespread use and adaptation of the Douglas Fir into the country. This was assisted by none other than the German PM Bismarck who took a personal interest and was the landlord of a large plantation for the tree in Friedrichsruh. In addition to commercial exploitation Booth also acted as horticultural advisor to J A W von Carstenn one of the founders of Berlin's Grunewald Villa Colony (Booth was responsible for the plantings) and the expansion of the Kurfürstendamm. He eventually settled in Berlin in the 1880s. Absent from Pritzel.

\$725

27. Stafford, J R.

Dr. J R Stafford's Letter of Advice to Ladies.

New York: J R Stafford, 1864.

First Edition. Large 4to, bifolium, [4] pp. (printed in columns) with large, graphic, woodcut text illustrations.

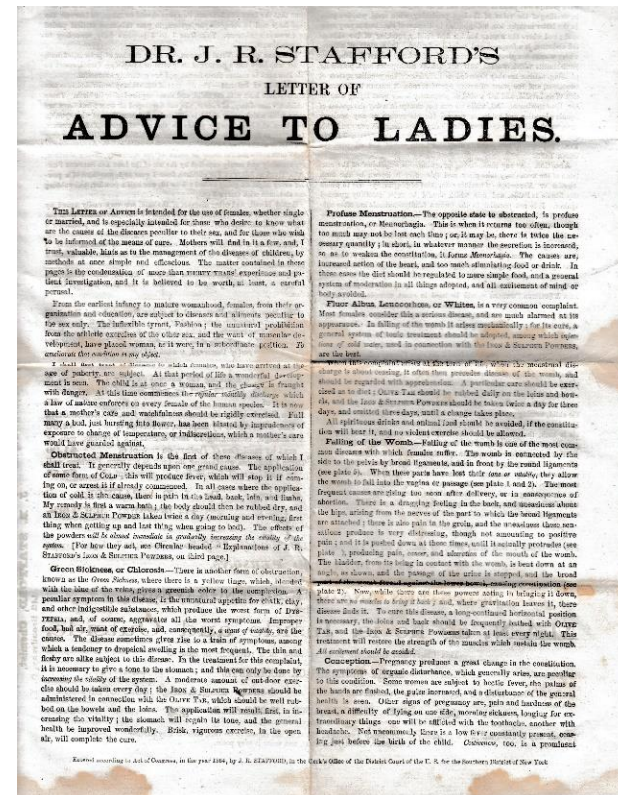
Very good; old folds; some occasional stains.

As issued.

A promotional piece for Stafford's publications and patent medicine offerings directed at women: "The Letter of Advice is intended for the use of females, whether single of married, and is especially intended for those who desire to know what are the causes of the

diseases peculiar to their sex, and for those who wish to be informed of the means to cure." In addition to medicinal advice and cures he offered the restoration of hair color etc. (Stafford's Olive Tar and iron and sulphur powders), and a pamphlet (Family Medical Adviser) containing 250 receipts with anatomical engravings as well as recommending the services of a "Mrs. Dr. Kewler, Female Physician", resident in Brooklyn. This letter and the advertised pamphlet/book are unlocated. There is no entry for Stafford in the Atwater collection catalog.

\$475



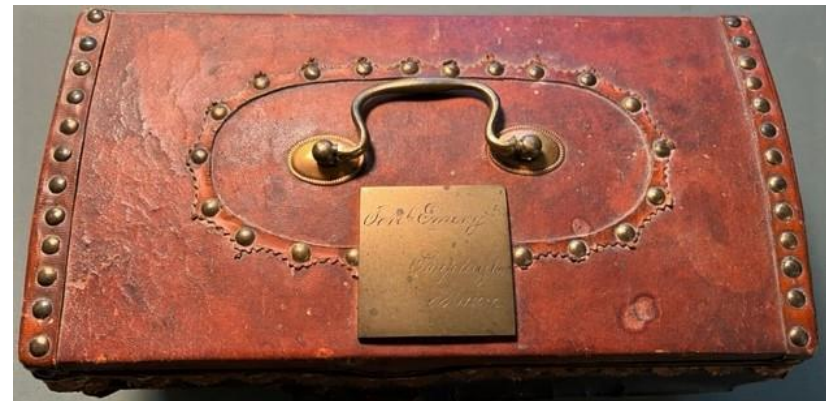
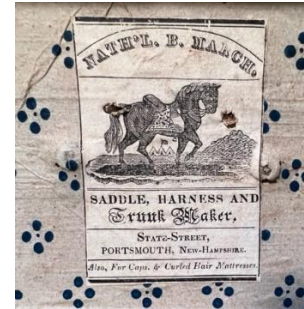
28. March, Nathaniel B [maker] - LEATHER BOX.  
**Letter Box.**

Portsmouth, New Hampshire: ca1820.

Artfully decorated leather covered pine wood box that meas. appx. 255 x 125 x 120 mm.. The interior is lined with batiked paper and retains the original cloth interior strap to stabilize the domed lid when open. The brass lock, dedication plate, handle and escutcheons are all present and original. Applied brass bosses are all present. The mounted leather on-lays are also all present. A mounted paper label of Nathaniel B March who describes his business as "saddle, harness and trunk maker" (he also made fur caps) on State Street, Portsmouth, New Hampshire is mounted to the inside of the dome lid. The paper label meas. appx. 85 x 62 mm. Very good; some spots; some moderate overall wear.

*March (1782-1862) was a saddlemaker in Portsmouth. The Atheneum has a similar, larger, document box in its collection with the same kind of decoration - but in overall poor condition. Their date is somewhere between 1815 - 1825. The box offered here has an awkwardly placed 2 inch square brass dedication plate - obviously added after the box was made - on the top. It is amateurishly engraved: Jere'h Emery / Shapleigh / Maine. This plate is almost a duplicate in style and execution to that on the box in the collection of the Atheneum. The Emery family settled the town in 1772 when they established a saw-mill there.*

\$850



END